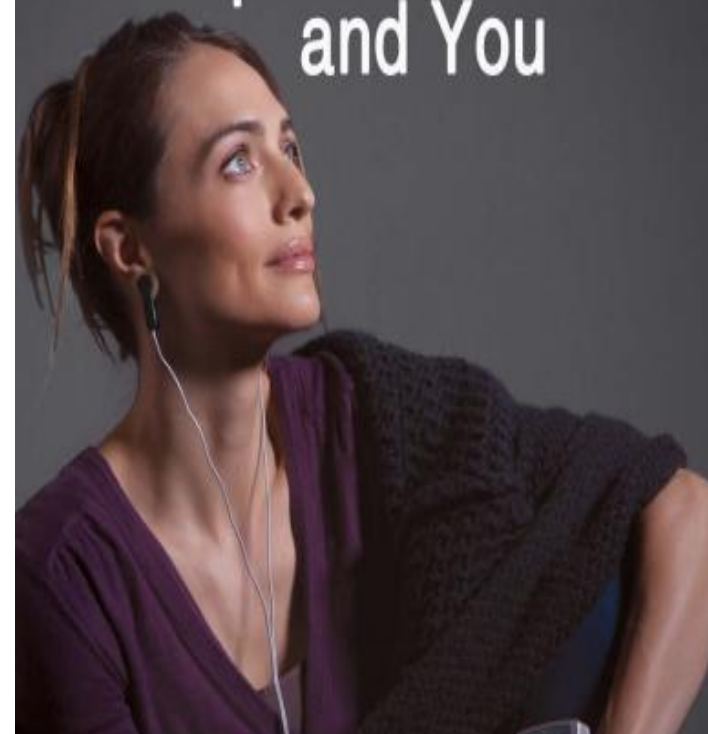




Alpha-Stim® AID and You



LET NOTHING STOP YOU.™

Headaches

Seventy participants using Alpha-Stim for headaches responded to: "If you are using Alpha-Stim CES for headaches, since starting CES, rate your improvement as...?" The findings from the total group, CES plus medication group (n=53) and CES only group (n=17) appear in Figure 3. In the total group, 58.5% of participants reported that CES was effective for headache. The CES-only group reported a 64.7% greater improvement than the CES plus medication group.

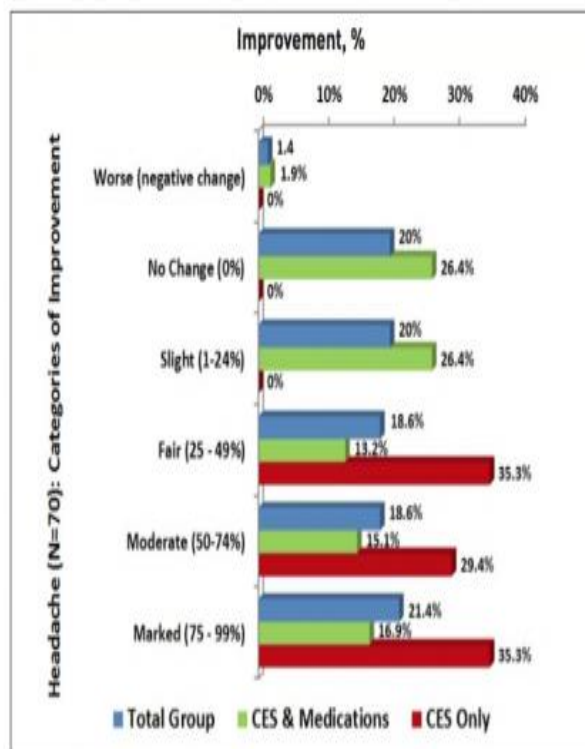


Figure 3. Perceived improvement in headache pain by category and group. CES, cranial electrotherapy stimulation

What is Alpha-Stim and How Does it Work?

Alpha-Stim is a clinically proven medical device that relieves anxiety, depression, insomnia and migraine using electromedical technology.

Alpha-Stim generates a unique patented waveform no other device can offer. Much like every white pill is not the same, the uniqueness of Alpha-Stim's waveform produces results vastly different from any other medical device.

Unlike medications which are introduced to your body in a chemical form and then broken down to smaller components such as electrons, Alpha-Stim begins at the electron level, allowing your body's cells to return to their natural functioning state.

Alpha-Stim provides longlasting, cumulative relief without the risk of negative side effects such as tolerance and addiction to medications.

What Makes Alpha-Stim Unique?

It's the waveform (**Figure 2**). Alpha-Stim generates a unique and patented waveform that no other device can replicate. The waveform in a therapeutic device is analogous to the precise chemical compound that differentiates one drug from another. Alpha-Stim's waveform is distinctive in its proven safety and efficacy. The waveform uses microcurrents (millionths of an ampere) delivered in a precise configuration via erclip electrodes which is specifically designed to increase alpha brainwaves and decreased delta waves as seen on quantitative electroencephalogram (QEEG) (**Figure 3**).

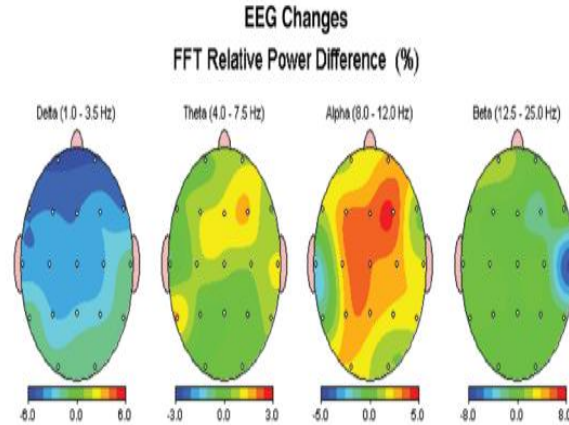


Figure 3. This quantitative EEG brain map shows the changes in brain activity by traditional EEG groupings in 30 university student volunteers after a single 20 minute treatment with Alpha-Stim at 0.5 Hz. Blue shows a decrease in activity of sleepy delta brainwaves while red shows an increase in activity of relaxing alpha brainwaves.

What to Expect

When used correctly, Alpha-Stim technology is significantly effective for 9 out of 10 people.

Patients suffering from pain, anxiety, or migraine may see noticeable results following a single treatment. Once the condition is under control, use of the Alpha-Stim can be decreased.

Following treatment, most physical activities may be resumed immediately. However, some patients may experience a euphoric feeling that may temporarily impair their mental and/or physical abilities for the performance of potentially hazardous tasks for up to several hours after treatment. Care should be taken when operating a motor vehicle until you know how treatment will effect you. no significant lasting side effects have been reported.