

BEMER

Pulsed Electromagnetic Field Therapy

BEMER stands for bio-electric magnetic energy regulation. This is safe, effective, and gentle technology. BEMER increases the blood flow in our circulatory system, meaning the blood flow in our smallest vessels. It helps to improve the delivery and absorption of oxygen and nutrients while eliminating metabolic waste. This helps stimulate healthy muscles in order to improve and facilitate tissue performance.

Pulsed electromagnetic Field (PEMF) therapy benefits patients with headache and migraine disorders.

Studies show that migraine pain is associated with uneven distribution of blood flow in the brain.

Low frequency pulsed electromagnetic fields allow the muscles, nerves, and blood vessels to relax. The relaxation of the body can allow the blood to flow more effectively to the brain which can reduce frequency of migraines and provide relief. Because of this, PEMF is a great way to treat migraine.



Super Pulsed Cold Laser

VieLight

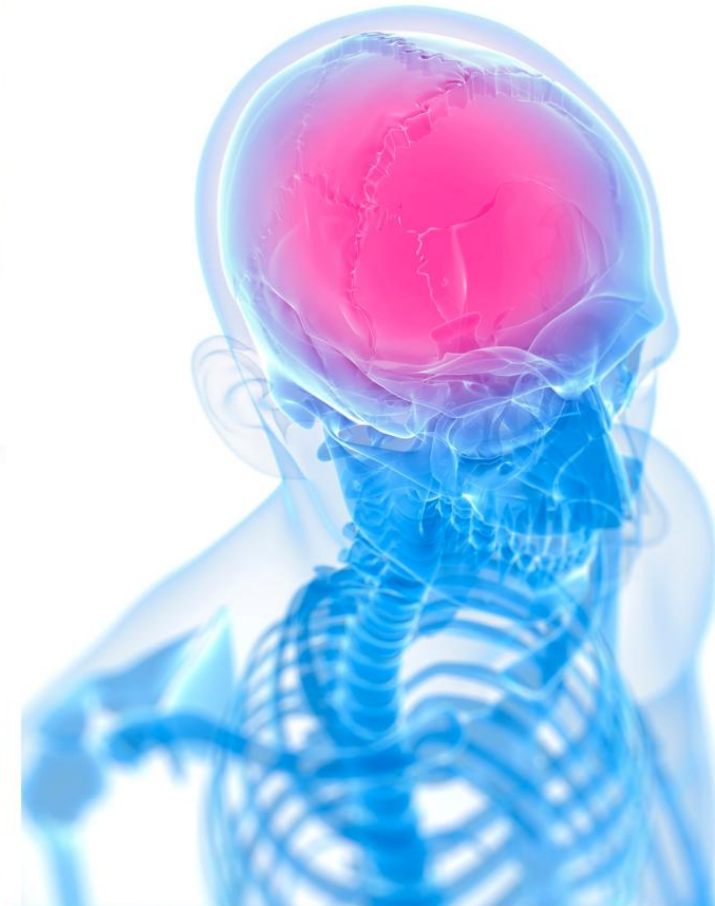


Alpha- Stim

Bemer



MIGRAINE TREATMENT WITHOUT DRUGS, INJECTIONS OR SURGERY



LONGNER CHIROPRACTIC

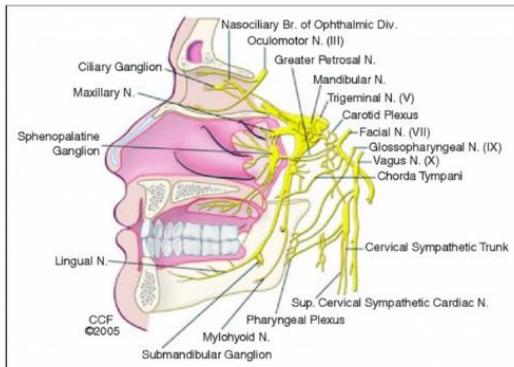
3712 HIGHWAY 95 SUITE 8
BULLHEAD CITY, AZ., 86442
(928) 763-9333

Super Pulsed Cold Laser Photobiomodulation

Benefits of laser therapy in migraine treatment

Laser therapy is a non-invasive, non-toxic, and pain-free solution to chronic pain. While standard medications offered to those suffering from migraines typically do little to increase the overall quality of life, laser therapy provides hope that freedom from chronic migraines can be found without paying an equally unsatisfactory price.

Several studies have shown treatment involving the sphenopalatine ganglion (SPG) to be effective in reducing episodes of chronic migraine (see Figure 1).



The SPG is the largest neurological ganglion outside the brain, located within the pterygopalatine fossa at the posterior attachment of the middle turbinate. This ganglion has sensory, parasympathetic, and sympathetic components that house the trigeminal nerve, branches of the palatine nerves, and various sympathetic and parasympathetic automatic branches all of which innervate the cranial cavities (eg, nose, mouth) as well as facial areas, and the nasal and pharyngeal glands.⁴ Based on the SPG's anatomy and physiology, it has become evident that many associated symptoms of chronic migraine may be managed by targeting the SPG using alternative methods that aim to decrease activity in this region.

Migraine may be related, at least in part, to a hyper-excited SPG. Stimulation of the SPG has been shown to induce a pathophysiological response seen in migraine attacks, including vasodilation of intra- and extra-cranial arteries, release of substance P and neurokinin A, as well as activation of meningeal nociceptors, which may be contributing to the pain.⁴

VIELIGHT

Recharging your brain's tiny power stations

Each of your body's 37 trillion cells has power stations inside. These power stations are called mitochondria, and the brain and heart hold the most per cell. Mitochondria make energy by combining the food we eat with the air we breathe. But mitochondria can be damaged by infections, toxins and stress or they can be taken offline by disease. When mitochondria go offline, the lights begin to dim or go out across your brain.

Who can benefit from the Vielight?



- ✓ Dementia, Alzheimer's or Parkinson's sufferers looking to improve symptoms
- ✓ Adults, teens and children who experience a concussion (of any level) playing contact sports, or through an accident or fall
- ✓ People with ongoing headaches, migraines, mood or behavioural issues, and those who have had a head injury at some point
- ✓ Dementia, Alzheimer's or Parkinson's sufferers looking to improve symptoms
- ✓ People who feel their fatigue is mental as well as physical
- ✓ Executives and students in high-stress conditions, working or studying crazy hours and needing their brain constantly firing on all cylinders

Alpha-Stim

What is Alpha-Stim and How Does it Work?

Alpha-Stim is a clinically proven medical device that relieves anxiety, insomnia, depression and migraine using electromedical technology.



When used correctly, Alpha-Stim technology is significantly effective for 9 out of 10 people.

Patients suffering from pain, anxiety, or migraine may see noticeable results following a single treatment. Once the condition is under control, use of the Alpha-Stim can be decreased.

Alpha-Stim generates a unique panted waveform no other device can offer. Much like every white pill is not the same, the uniqueness of Alpha-Stim's waveform produces results vastly different from any other medical device.

Unlike medications which are introduced to your body in a chemical form and then broken down to smaller components such as electrons, Alpha-Stim begins at the electron level, allowing your body's cells to return to their natural functioning state.